

## ADVANCED ULTRASONIC SYSTEMS FOR A CLEANER FUTURE



### MOT-200N ADVANCED

Speed



Energy Savings

Robustness and Reliability  
With TierraTech guarantee



Silence  
60 db maximum

Ergonomics  
Simplicity and comfort



Water savings  
Complete watertightness that prevents  
loss of water by evaporation

# MOT-200N ADVANCED

## GENERATORS AND EMITTERS

1 Ultrasonic generator with an output power of 1700Wp (3400w p-p) with automatic power monitoring and frequency wave.

The operating frequency is 40 kHz with a sweeping system of  $\pm 2\%$

1 ultrasonic emitter with a power of 1700Wp (3400w p-p) made of AISI 316L stainless steel with a thickness of 2.5 mm, with 34 piezoelectric PZT (lead zirconate titanate) transducers with a high-performance aluminium alloy body.

## TECHNICAL DATA AND MEASURES

Ultrasonic cleaning tank made of AISI 304L stainless steel with a thickness of 2 mm. Thermal-acoustic insulation of 20 mm thickness.

Tank capacity: 215 L  
WFS capacity: 30 L

AISI 304L opening/closing lid with 10 mm thick thermal-acoustic insulation.

Pneumatic platform made of AISI 304L stainless steel, with a load capacity of up to 200 kg.

WFS (Waterflow system for oil separation) independent tank from the cleaning tank for the collection of oils and particles on the surface, which also includes a drainage system for the oil discharge.

Electric resistance with a power of 3750 W made of AISI 316L, a metal alloy resistant to high temperatures and corrosion.

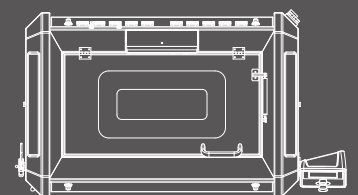
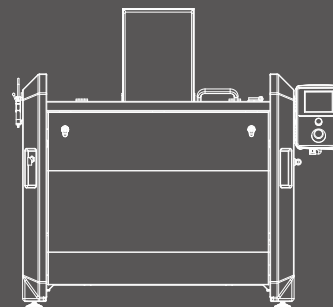
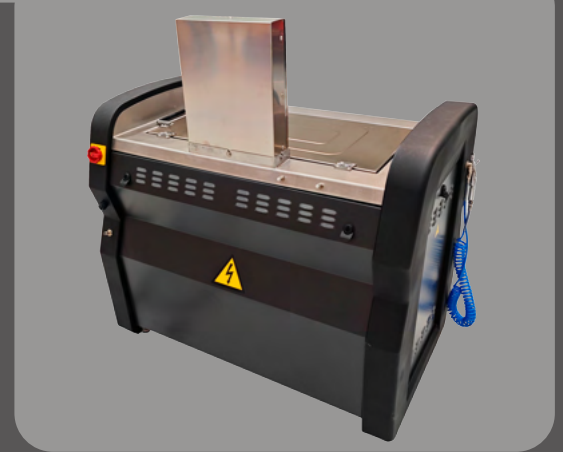
\*(Optional) TTF1 bag filter for removing sludge from the bottom of the tank. Made of AISI 304L stainless steel, with a pressure gauge and the capacity to integrate bags from 5 to 200  $\mu\text{m}$ .

## CONTROL PANEL

7" Screen & TFT Display

Control of the preheating time for the equipment, weekly calendar, alarms, heating element, as well as full control of the lifting platform and water level. It includes the ability to create different work programs.

✉ [tierratech@tierratech.com](mailto:tierratech@tierratech.com)



CAPACITY 215 LITRES

INTERNAL DIMENSIONS  
760x520x590 mm

PLATFORM DIMENSIONS  
730x460x380 mm

EXTERNAL DIMENSIONS  
1530x940x940 mm

