

ADVANCED ULTRASONIC SYSTEMS FOR A CLEANER FUTURE



MOT-400N ADVANCED

Speed



Energy Savings

Robustness and Reliability
With TierraTech guarantee



Silence
60 db maximum

Ergonomics
Simplicity and comfort



Water savings
Complete watertightness that prevents
loss of water by evaporation

MOT-400N ADVANCED

GENERATORS AND EMITTERS

1 Ultrasonic generator with an output power of 3400Wp (6800w p-p) with automatic power and frequency waveform monitoring.

The working frequency is 40 kHz with a sweep system of $\pm 2\%$.

2 ultrasonic emitters with a power of 1700Wp (3400w p-p) made of 2.5 mm thick AISI 316L stainless steel, with 34 PZT (lead zirconate titanate) piezoelectric transducers with high performance aluminium alloy body.

TECHNICAL DATA

Ultrasonic cleaning tank made of AISI 304L stainless steel, 2 mm thick. Thermal-acoustic insulation 20 mm thick.

Vat capacity: 415 L
WFS capacity: 45 L

Opening/closing lid AISI 304L with 10 mm thick thermal-acoustic insulation.

Pneumatic platform made of AISI 304L stainless steel, with a load capacity of up to 300 kg.

WFS (Waterflow system for oil separation) tank independent of the cleaning tank for the collection of oils and particles on the surface, which also contains a drain for oil drainage.

Electrical resistance with a power of 7500W built in AISI 316L, a metal alloy, resistant to high temperatures and corrosion.

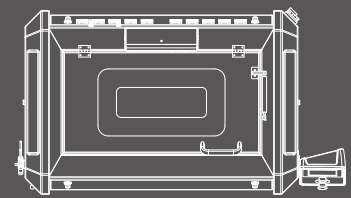
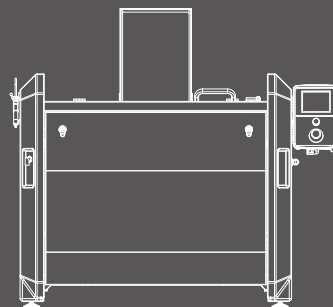
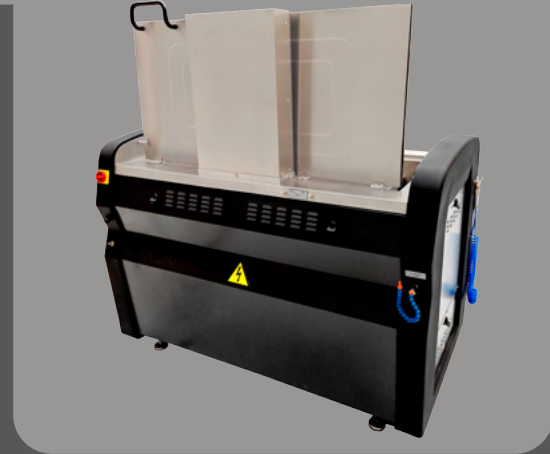
* (Optional) Bag filter TTF2 for the removal of sludge from the bottom of the tank. Built in stainless steel AISI 304L, pressure gauge and the capacity to integrate bags from 5 to 200 μm or cartridges from 0,2 to 105 μm .

CONTROL PANEL

7" Screen & TFT Display

Time control for pre-heating of the equipment, weekly calendar, alarms, heating resistance, as well as total control of the lifting platform and water level. It includes the possibility of creating different work programmes

✉ tierratech@tierratech.com



CAPACITY 415 LITRES

INTERNAL DIMENSIONS
1100x615x680 mm

USEFUL DIMENSIONS
1060x520x430 mm

EXTERNAL DIMENSIONS
1940x1070x1050 mm

